

FCX DTM

Release 1.0.0.320

INSTALLATION NOTE

Summary

1. Introduction.....	2
2. Package installation.....	3
3. Using FCX-DTM with PACTware FDT frame application.....	4
3.1. Checking DTM device drivers	4
3.2. Connecting FCX AII/AIII pressure transmitters.....	6

Fuji Electric France S.A.S.

46, rue Georges Besse – ZI du Brézet - F- 63039 Clermont-Ferrand CEDEX 2 - FRANCE
Tél. : +33 (0)4 73 98 26 98 / Fax. : +33 (0)4 73 98 26 99 – Email : sales.dpt@fujielectric.fr – web : www.fujielectric.fr
S.A.S. au capital de 4 573 000 € - RCS Clermont-Ferrand - Siret B 400 841 680 000 20 - NAF 2651 B

1. Introduction

The FCX-DTM Package includes:

- One DTM supporting FCX-AII V4 (FCX-AII) and FCX-AII V5 (FCX-AIIS) HART 5 series of Fuji Electric pressure transmitters
- One DTM supporting FCX-AII VG (FCX-AIIS) HART 7, SIL certified, series of Fuji Electric pressure transmitters.

Notes:

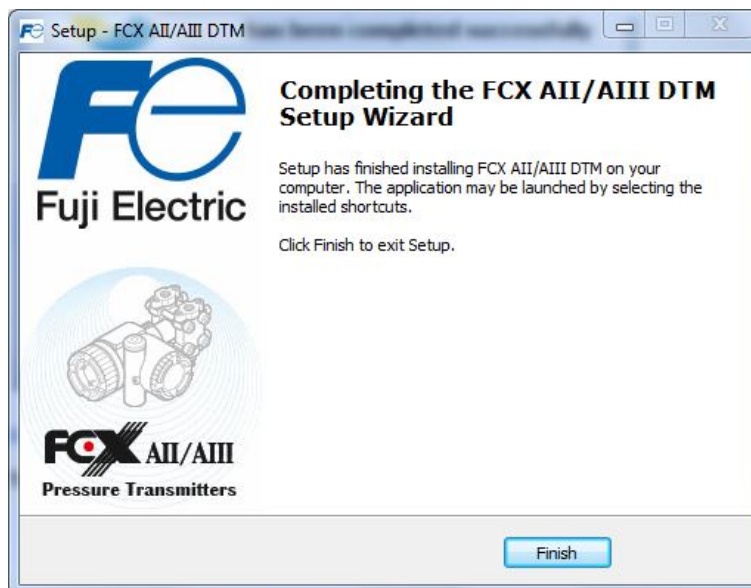
- (1) A FDT user interface, such as PACTware, must be installed before using FCX-DTM package
- (2) A HART serial modem with its associated Windows driver and DTM must be installed before using the FCX-DTM package
- (3) FCX-DTM 1.0.0.302 release runs under the following operating system: Windows 7, Windows 8 and Windows 10 (x86, x64)
- (4) Installation of the latest revision of Microsoft.NET Framework is recommended before using the FCX-DTM 1.0.0.320 release

2. Package installation

Execute the *FCXDTM_1.0.0.320.exe* file.



Select 'Next'



Then click 'finish' to exit setup.

Fuji Electric France S.A.S.

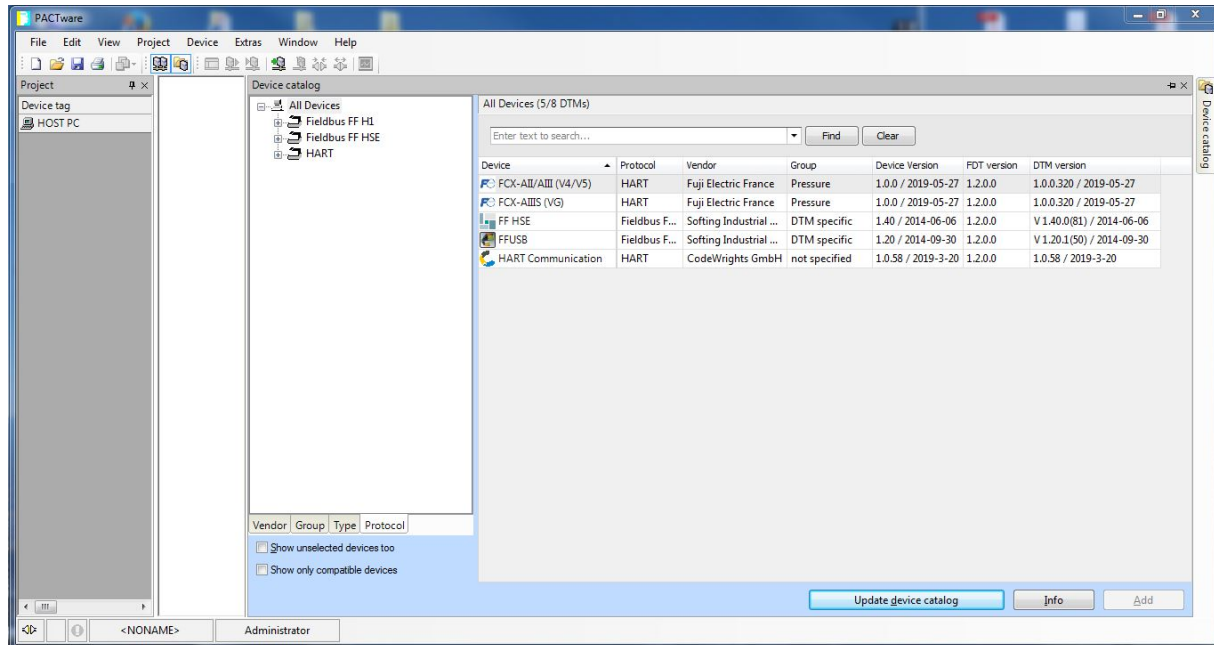
46, rue Georges Besse – ZI du Brézet - F- 63039 Clermont-Ferrand CEDEX 2 - FRANCE
Tél. : +33 (0)4 73 98 26 98 / Fax. : +33 (0)4 73 98 26 99 – Email : sales.dpt@fujielectric.fr – web : www.fujielectric.fr
S.A.S. au capital de 4 573 000 € - RCS Clermont-Ferrand - Siret B 400 841 680 000 20 - NAF 2651 B

3. Using FCX-DTM with PACTware FDT frame application

When launching, PACTware should scan to find out new DTMs to be added into the device catalog.

3.1. Checking DTM device drivers

Open the 'View/Device catalog' menu or press F3 to display the DTM device driver catalog. The following 'Device catalog' window is displayed:



In order to communicate with FCX series of pressure transmitters, the following DTMs must be listed:

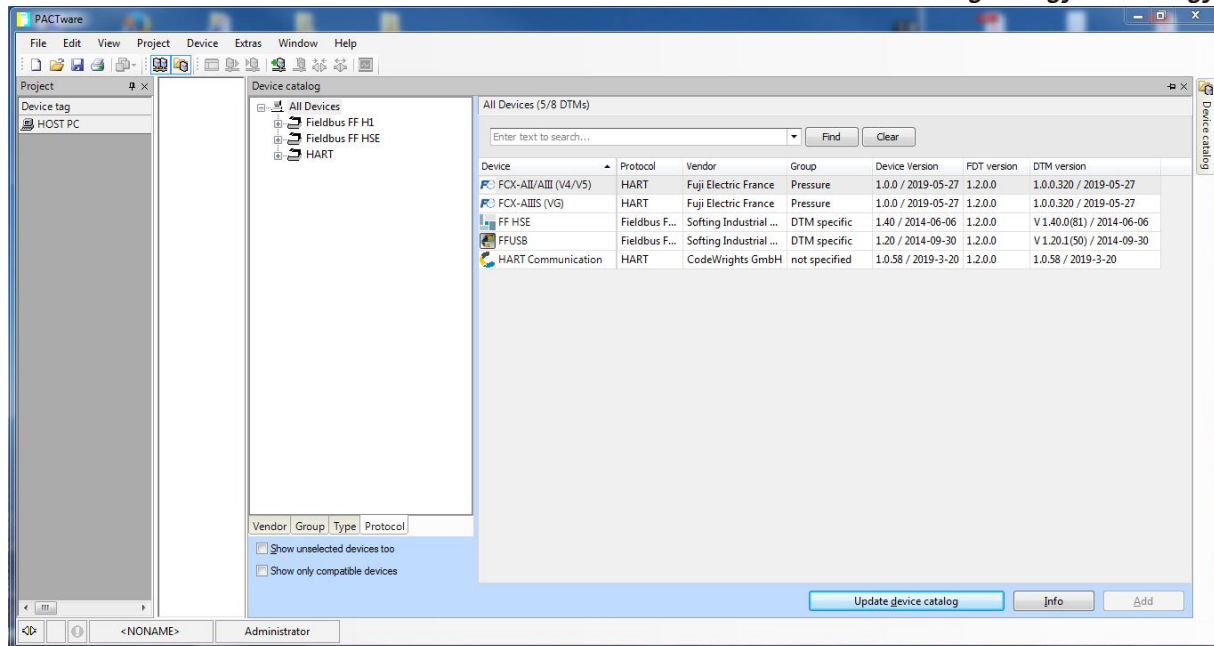
- Device = FCX-AII/AIII (V4/V5), DTM version = 1.0.0.320
- Device = FCX-AIIIS (VG), DTM version = 1.0.0.320
- Device = HART Communication

If you cannot find these DTMs, click the 'Update device catalog' button.

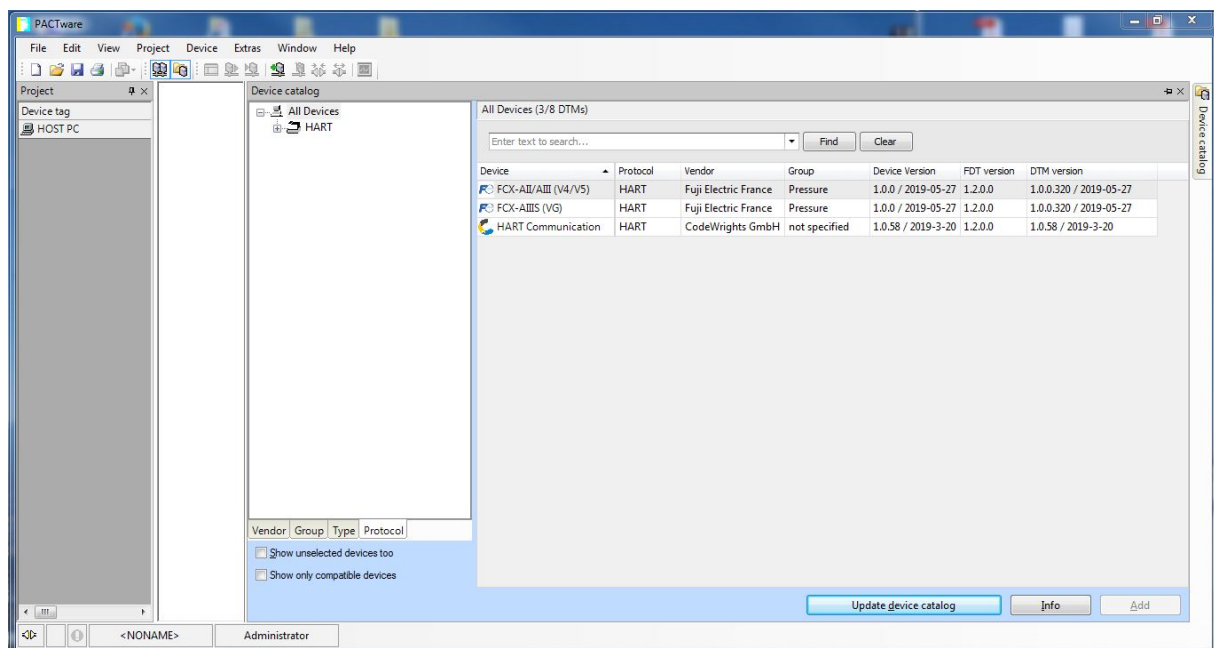
To ease your DTMs selection or the ones to be displayed in the Device catalog, click the 'Extra/Device catalog administration' menu to open the following 'Device catalog administration' window and check the DTMs you want to be used:

Fuji Electric France S.A.S.

46, rue Georges Besse – ZI du Brézet - F- 63039 Clermont-Ferrand CEDEX 2 - FRANCE
Tél. : +33 (0)4 73 98 26 98 / Fax. : +33 (0)4 73 98 26 99 – Email : sales.dpt@fujielectric.fr – web : www.fujielectric.fr
S.A.S. au capital de 4 573 000 € - RCS Clermont-Ferrand - Siret B 400 841 680 000 20 - NAF 2651 B



The device catalog will be then displayed according to your own selection, as shown here below.



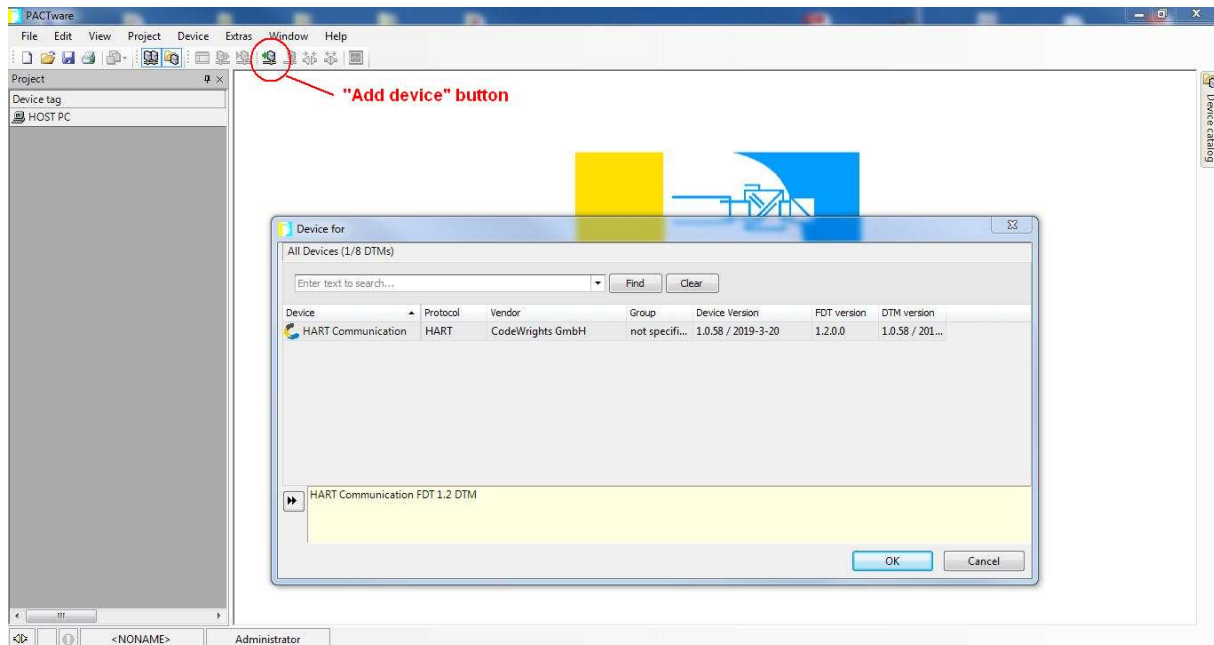
Fuji Electric France S.A.S.

46, rue Georges Besse – ZI du Brézet - F- 63039 Clermont-Ferrand CEDEX 2 - FRANCE
Tél. : +33 (0)4 73 98 26 98 / Fax. : +33 (0)4 73 98 26 99 – Email : sales.dpt@fujielctric.fr – web : www.fujielctric.fr
S.A.S. au capital de 4 573 000 € - RCS Clermont-Ferrand - Siret B 400 841 680 000 20 - NAF 2651 B

3.2. Connecting FCX AII/AIII pressure transmitters

The first step is to create the HART communication link that establishes the physical connection between the PACTware FTD and your HART modem.

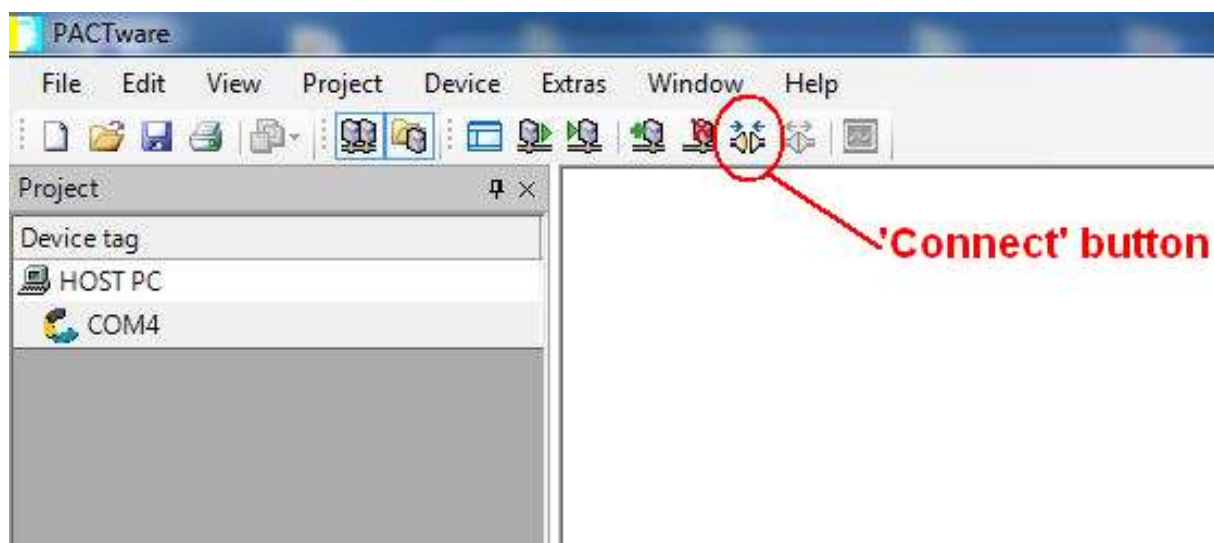
Open the 'Device/Add device' menu or click the 'Add device' button to open the following 'Device for' window:



Select the HART communication device and click the 'OK' button

The following picture shows the HART communication added on the Project window. In this example, the HART modem driver uses the virtual serial communication port #4.

The next step is to physically connect the HART communication device to the PACTware FTD by opening the 'Device/Connect' menu or clicking the 'Connect' button.



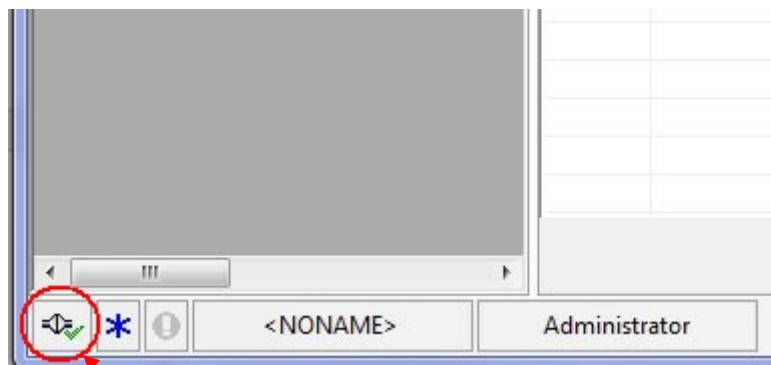
Fuji Electric France S.A.S.

46, rue Georges Besse – ZI du Brézet - F- 63039 Clermont-Ferrand CEDEX 2 - FRANCE

Tél. : +33 (0)4 73 98 26 98 / Fax. : +33 (0)4 73 98 26 99 – Email : sales.dpt@fujielectric.fr – web : www.fujielectric.fr

S.A.S. au capital de 4 573 000 € - RCS Clermont-Ferrand - Siret B 400 841 680 000 20 - NAF 2651 B

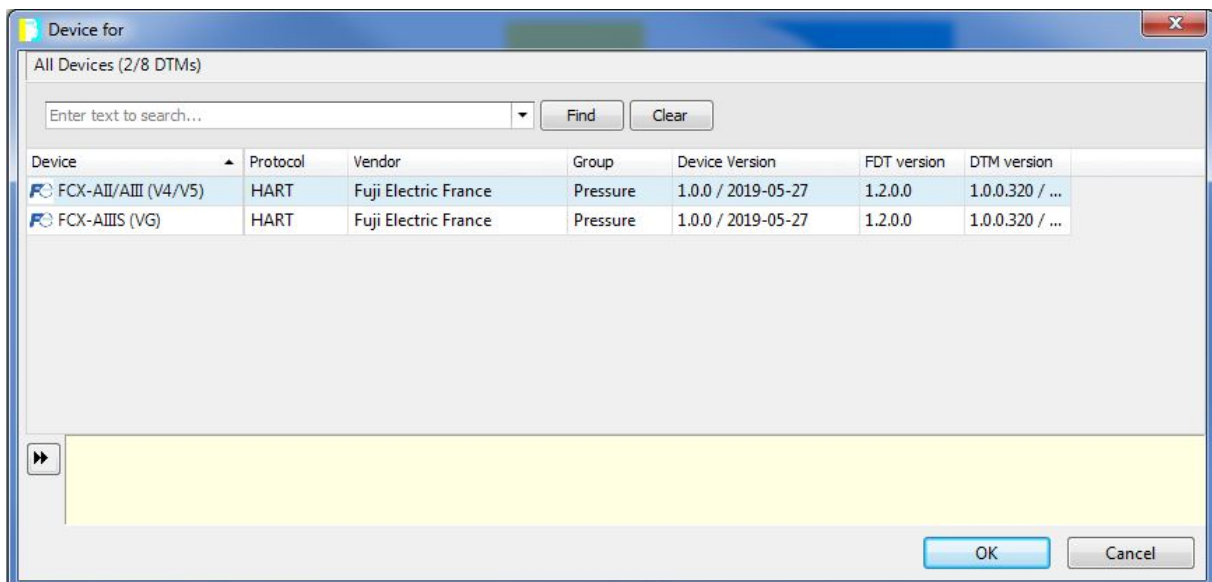
The connection status is displayed on the bottom left of the main PACTware window.



Connection Status

The FCX DTM can be now added using the same way.

Select the HART communication device (COM4) and open the 'Device/Add' device menu or click the 'Add device' button to open the following 'Device for' window:



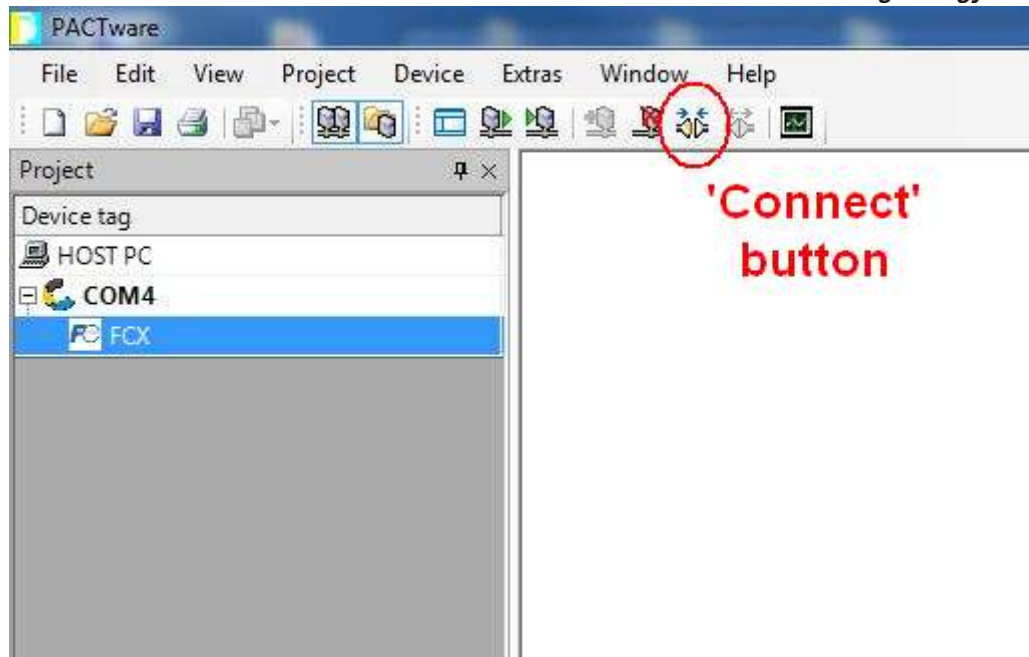
Depending the targeted FCX pressure transmitter, select either the 'FCX-AII/AIII (V4/V5)' or 'FCX-AIIIS (VG)' DTM and click the 'OK' button.

The picture below shows the FCX device driver added hierarchically below the HART communication device.

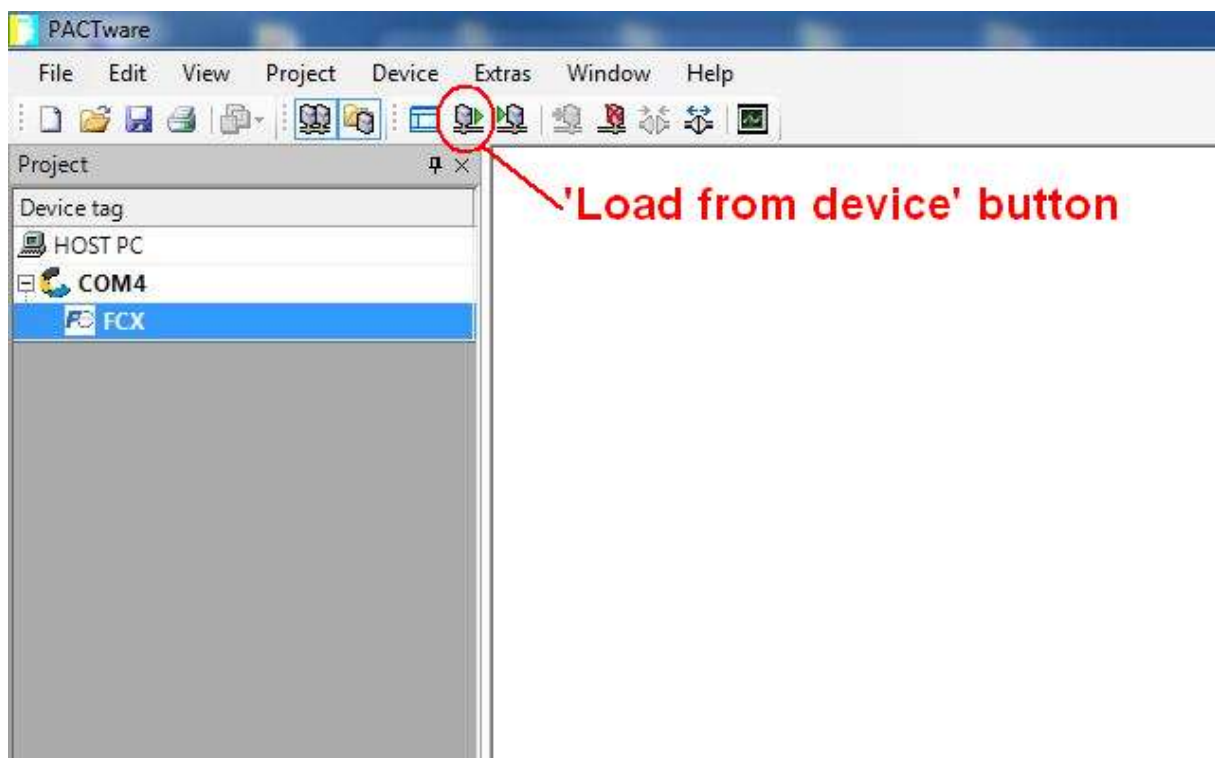
To physically connect the FCX device driver to the HART communication device, select the FCX device and open the 'Device/Connect' menu or click the 'Connect' button.

Fuji Electric France S.A.S.

46, rue Georges Besse – ZI du Brézet - F- 63039 Clermont-Ferrand CEDEX 2 - FRANCE
Tél. : +33 (0)4 73 98 26 98 / Fax. : +33 (0)4 73 98 26 99 – Email : sales.dpt@fujielectric.fr – web : www.fujielectric.fr
S.A.S. au capital de 4 573 000 € - RCS Clermont-Ferrand - Siret B 400 841 680 000 20 - NAF 2651 B



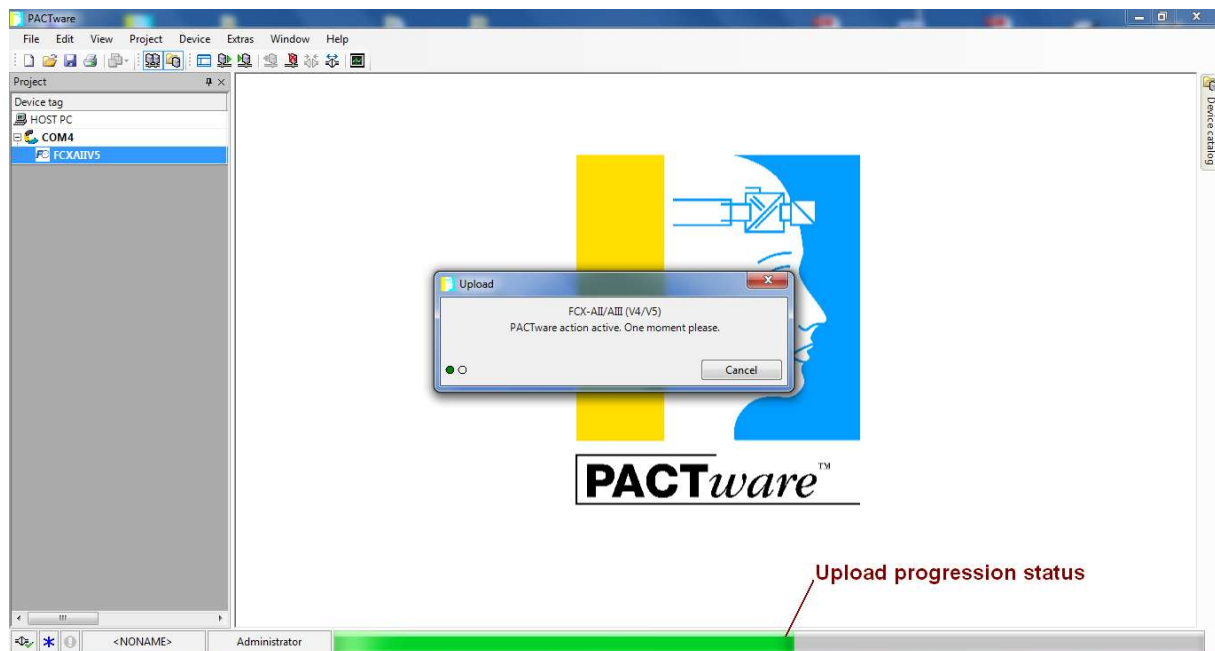
If a FCX pressure transmitter is powered on and connected to the HART communication link, you can now upload all the transmitter data by opening the '*Device/Load from device*' menu or clicking the '*Load from device*' button.



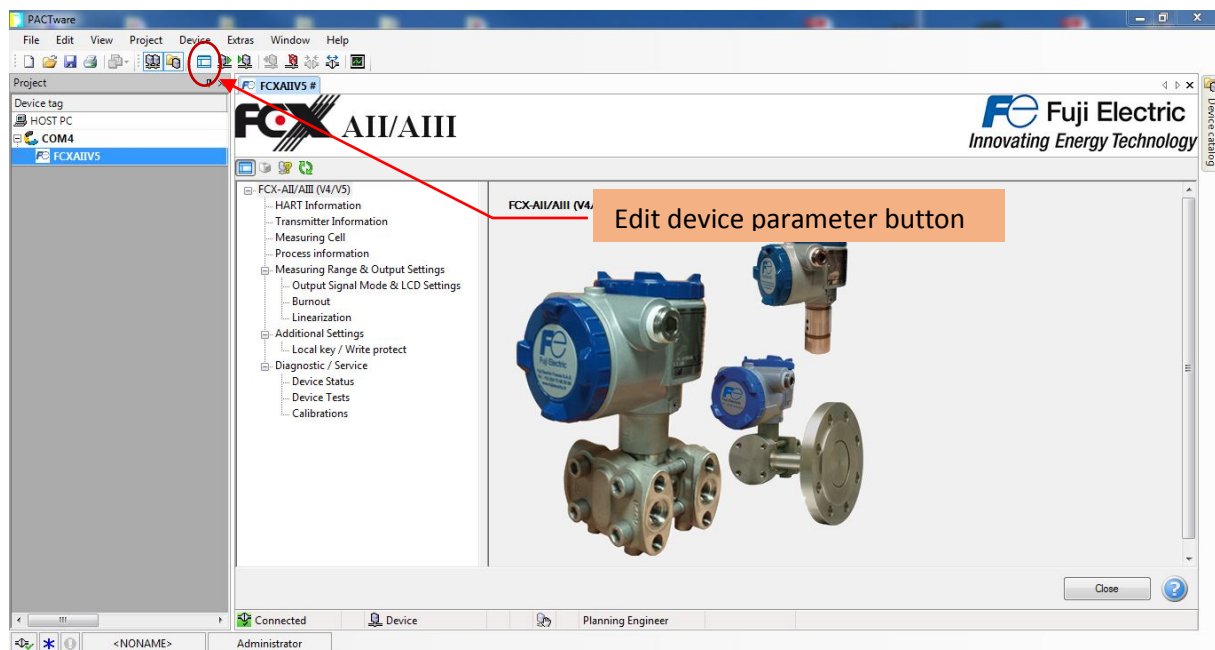
Fuji Electric France S.A.S.

46, rue Georges Besse – ZI du Brézet - F- 63039 Clermont-Ferrand CEDEX 2 - FRANCE
Tél. : +33 (0)4 73 98 26 98 / Fax. : +33 (0)4 73 98 26 99 – Email : sales.dpt@fujielectric.fr – web : www.fujielectric.fr
S.A.S. au capital de 4 573 000 € - RCS Clermont-Ferrand - Siret B 400 841 680 000 20 - NAF 2651 B

The picture below shows the retrieving of parameters and the associated progression status bar.



Transmitter parameters can be now displayed by opening the 'Device/Parameter/Online parameterization' menu or clicking the 'Edit device parameter' button as shown in the picture below



Fuji Electric France S.A.S.

46, rue Georges Besse – ZI du Br  zet - F- 63039 Clermont-Ferrand CEDEX 2 - FRANCE
T  l. : +33 (0)4 73 98 26 98 / Fax. : +33 (0)4 73 98 26 99 – Email : sales.dpt@fujielectric.fr – web : www.fujielectric.fr
S.A.S. au capital de 4 573 000    – RCS Clermont-Ferrand - Siret B 400 841 680 000 20 - NAF 2651 B