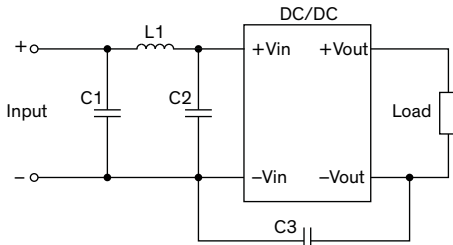


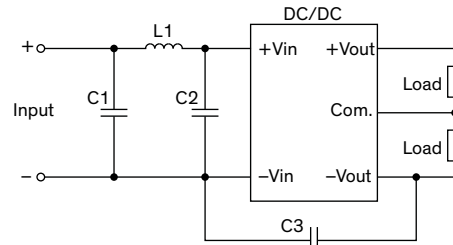
EMI Consideration

Suggested filter to comply with EN55032 Class A & B limits

Single output models



Dual output models



EN55032 class A

Models	C1	C2	C3	L1	inductor (accessory)	
					order code	datasheet
12 Vin	22 μ F / 25 V 1206 MLCC	–	220 pF / 3 kV 1808 MLCC	6.8 μ H / 0.9 A	TCK-129	www.tracopower.com/products/tck129.pdf
24 Vin	10 μ F / 50 V 1206 MLCC	–	470 pF / 3 kV 1808 MLCC	15 μ H / 0.85 A	TCK-131	www.tracopower.com/products/tck131.pdf
48 Vin	2.2 μ F / 100 V 1206 MLCC	–	680 pF / 3 kV 1808 MLCC	68 μ H / 0.37 A	TCK-133	www.tracopower.com/products/tck133.pdf

EN55032 class B

Models	C1	C2	C3	L1	inductor (accessory)	
					order code	datasheet
12 Vin	22 μ F / 25 V 1206 MLCC	22 μ F / 25 V 1206 MLCC	220 pF / 3 kV 1808 MLCC	6.8 μ H / 0.9 A	TCK-129	www.tracopower.com/products/tck129.pdf
24 Vin	10 μ F / 50 V 1206 MLCC	10 μ F / 50 V 1206 MLCC	470 pF / 3 kV 1808 MLCC	15 μ H / 0.85 A	TCK-131	www.tracopower.com/products/tck131.pdf
48 Vin	2.2 μ F / 100 V 1206 MLCC	2.2 μ F / 100 V 1206 MLCC	680 pF / 3 kV 1808 MLCC	68 μ H / 0.37 A	TCK-133	www.tracopower.com/products/tck133.pdf